

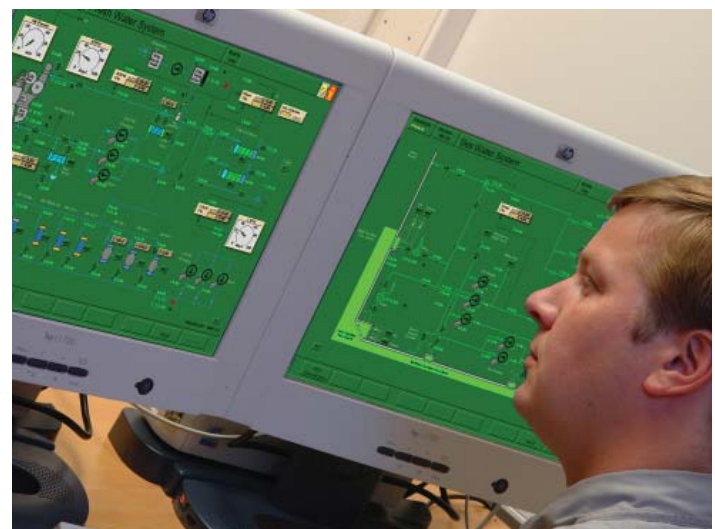


Model Description

The MaK 8M32C simulates a stern trawler with a single installation MaK 8M32C medium speed (four stroke) diesel engine connected to CP propeller.

The electrical power plant includes two diesel generators and one shaft generator. The steam plant includes an oil fired boiler and an auxiliary boiler.

Control room operator station and panels as well as bridge and steering panels are included.



Main Engine Data

Type	MaK 8M32C
Cylinder bore.	32mm
Piston stroke	480mm
No. of cylinders	8
No. of air coolers	1
No. of turbochargers	1
Continuous service rating	3840kW
Corresp. Eng. speed	600 rpm
Mean effective pressure	24.9 bar
No. of propeller blades	5
Propeller pitch	0.9 P/D
Reduction gear	0.251:4
Propeller diameter	4.6 m
Propeller speed	150 rpm
Spec. fuel consumption	178 g/kwh

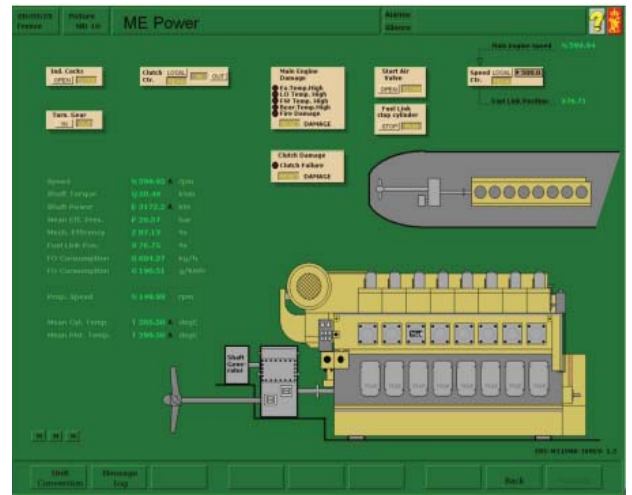
Vessel's Main Particulars

Length overall	60.00 m
Breadth moulded	12.00 m
Draught	5.5 m
Deadweight	11000 tons
Speed	16 knots

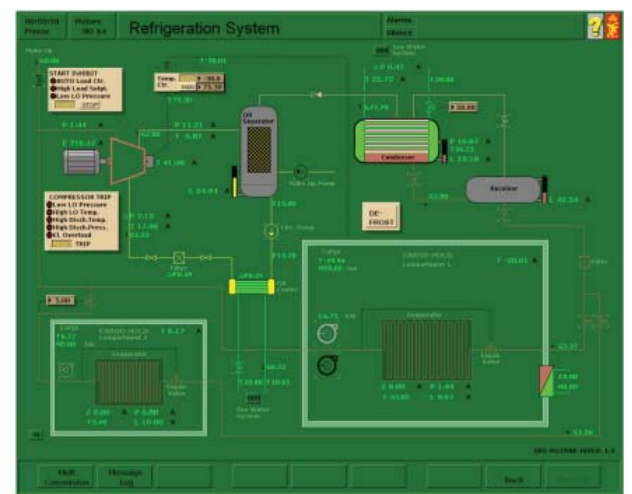
Model main specifications

The following dynamic models and features are included:

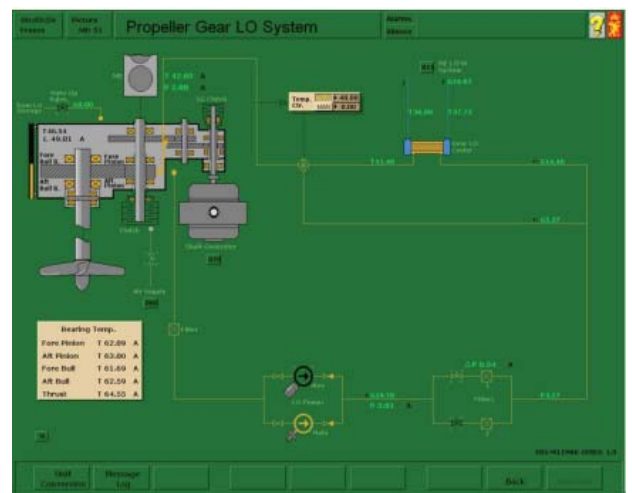
- Fuel oil system including bunker, settling, service tanks and purifiers
- Fuel oil high pressure system including viscosity control
- Main engine lubrication oil system including purifier
- Main sea water system including ballast tanks
- Main engine fresh water system including fresh water generator
- Main engine turbocharger system
- Main engine sea water system
- Propeller gear oil system including shaft generator
- Propeller servo LO system
- Stern tube system
- Compressed air system including two start air and one service air compressor
- Bilge wells and bilge water separator
- Refrigeration system
- Electric power plant including two diesel generators, one shaft generator and power management
- Steam system including exhaust and oil fired boiler
- Remote control panels including panels for bridge, ECR and at engine side.



Picture MD10 ME Power



Picture MD64 Refrigeration System



Picture MD51 Propeller Gear LO System



STCW95 sets performance standards for simulators used for training and assessment of competence. Any simulator need to meet the STCW A-1/2



The model received DNV Statement of compliance based on Standard for Certification of Maritime Simulators No. 2.14 October 2007.

Kongsberg Maritime AS

Bekkajordet 8A, POB 1009 N-3194 Horten, Norway
Telephone +47 33 03 20 00 Telefax +47 85 02 80 28

www.km.kongsberg.com



KONGSBERG