

M3 SONAR® QUICKSTART

1 INSTALL THE SOFTWARE

- Insert the USB flash drive into your computer.
- Run the Setup file.
- Apply the default settings during installation.
- Click **Yes** to install the KML USB Converter when prompted.



Power Supply



Ethernet Cable

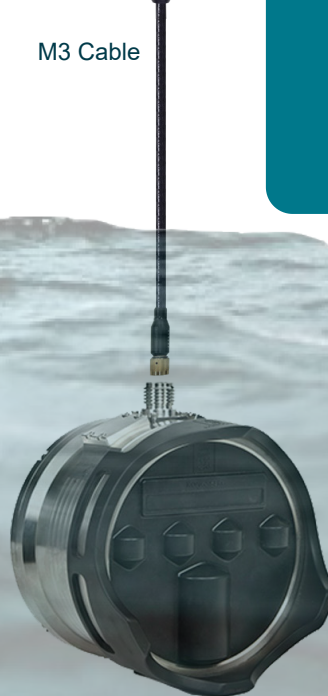
2 SET YOUR IP ADDRESS

- Open the Control Panel in Windows.
- Select **Change adapter settings**.
- Set your computer's network IP address to 192.168.1.233.
- Set the Subnet Mask to 255.255.255.0.

3 INSTALL YOUR SONAR

- Connect the M3 system units as shown.
- Apply power to the Power Supply.

M3 Cable



Kongsberg Mesotech Ltd.
Tel: (604) 464 8144

To download the M3 Sonar software or manuals, visit:

<http://www.km.kongsberg.com/mesotechsoftware>
<http://www.km.kongsberg.com/mesotechdocumentation>

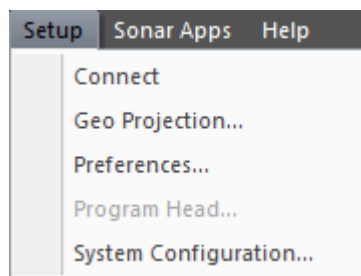
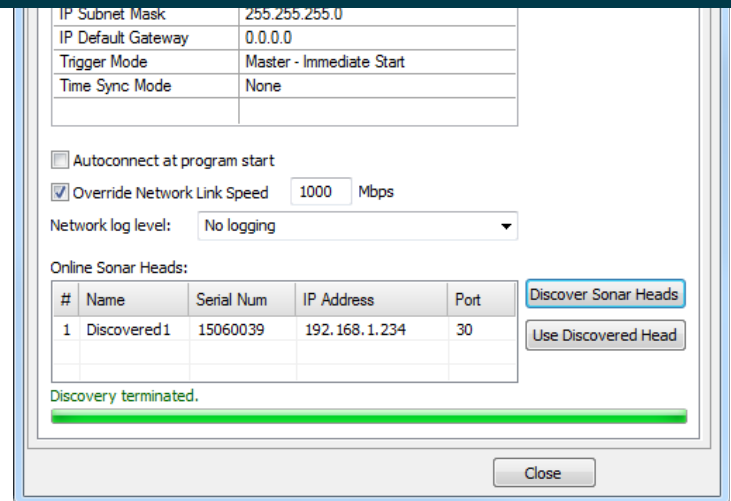


KONGSBERG

M3 SONAR® QUICKSTART

4 DISCOVER YOUR SONAR

- Double-click the M3 icon on your desktop.
- Click **Setup** → **System Configuration** → **Devices** → **Sonar Setup**.
- Click the **Discover Sonar Heads** button.
- Select your Sonar Head.
- Click **Use Discovered Head**.
- Click **Close**.

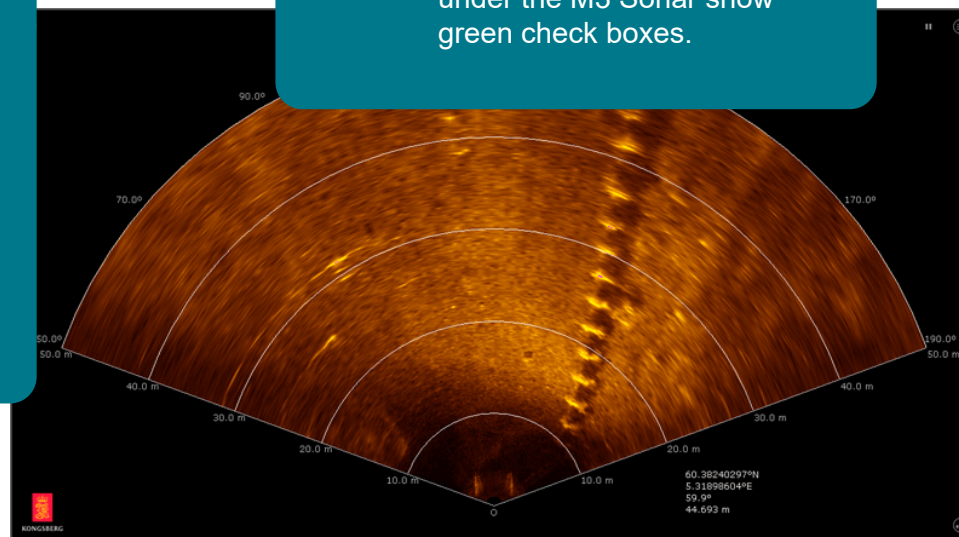


5 RUN YOUR SONAR

- Click **Setup** → **Connect**.
- Verify that the sonar view updates.
- Verify that no errors appear in the **Output Messages** window.
- Click on "Active" on the right side of the status bar.
- Verify that all items listed under the M3 Sonar show green check boxes.

6 POWER OFF THE SONAR

- Click **Setup** → **Disconnect** in the M3 software.
- Close the M3 Software.
- Turn off the computer.
- Disconnect the power cord leading to the power supply, or switch off the breaker supplying power to the M3 Sonar.



Kongsberg Mesotech Ltd.
Tel: (604) 464 8144

To download the M3 Sonar software or manuals, visit:

<http://www.km.kongsberg.com/mesotechsoftware>
<http://www.km.kongsberg.com/mesotechdocumentation>



KONGSBERG