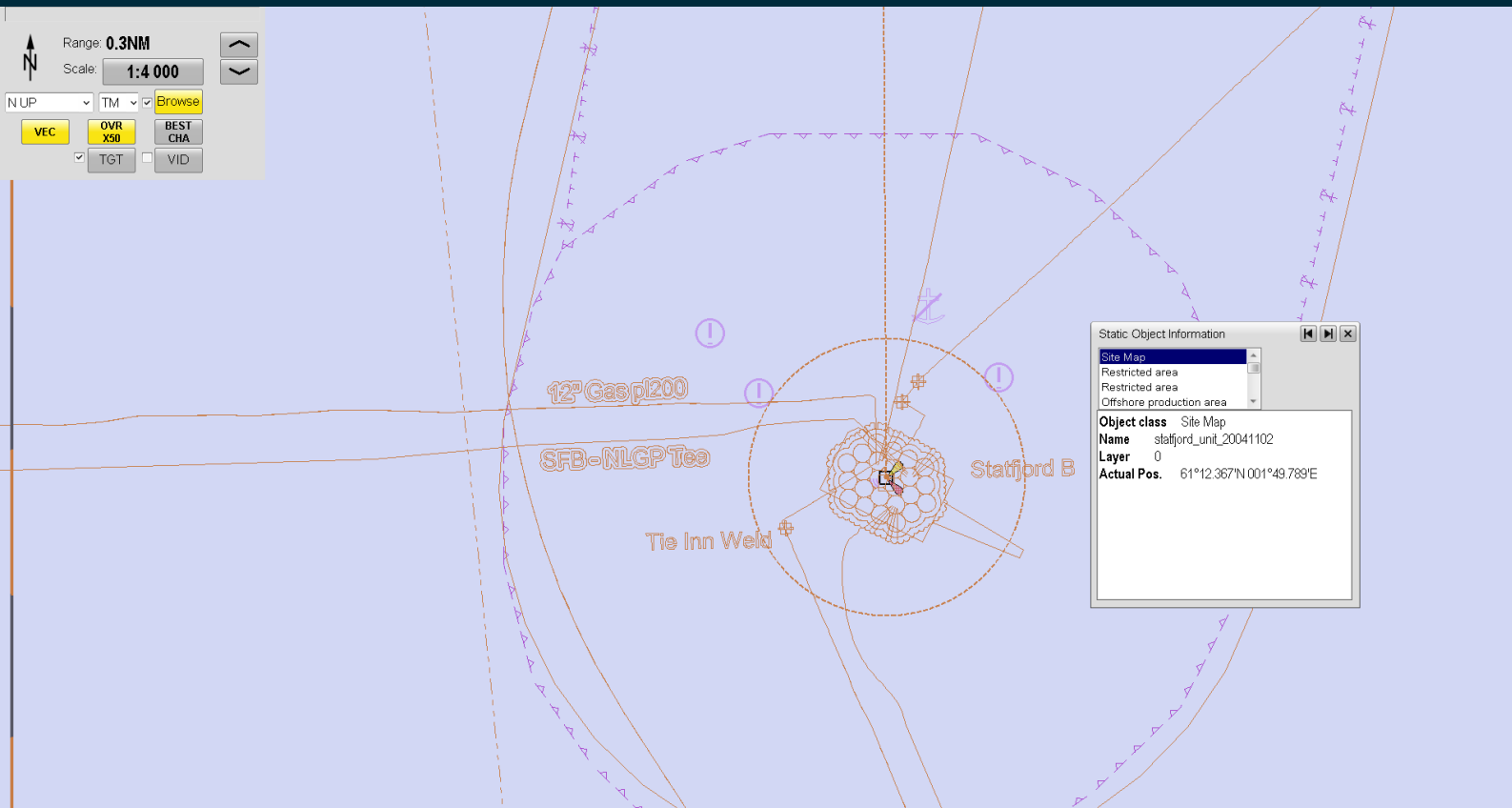


SITE MAPS



KONGSBERG



SITE MAPS FOR K-BRIDGE ECDIS AND K-BRIDGE PLANNING STATION

The Site Maps option for K-Bridge ECDIS and K-Bridge Planning Station allows user-defined maps or graphical data to be overlaid on the chart.

Site maps can represent any object at a particular location. Such objects might include submerged or semi-submerged constructions, cabling or pipelines, wind farms or any other potential obstacles to shipping.

The Site Maps option is an additional software module that can be added to the K-Bridge ECDIS and Planning Station applications.

Site maps can be imported in the following formats:

- DXF and DWG: AutoCAD vector file formats
- DAF: a Kongsberg Maritime proprietary format for plotting depth contours
- GeoTIFF: a raster format that includes georeferencing information; it can be used, for example, to overlay aerial photographs on the chart

FEATURES

- Handles most common projections, datums and coordinate systems.
- Allows you to perform trial and error imports of a site map file in case you need to adjust the datum and projection information in the file.
- Themes and layers in DXF/DWG files are supported, so that the operator can show or hide information as required.
- The site maps can easily be turned on/off and displayed in different ways on the chart.
- Several site maps can be displayed on the chart at the same time.
- By defining a minimum scale for the site maps, you can choose not to display them when zooming out on the chart.
- Once enabled, there will be a SiteMaps button in the main menu or Options menu for easy access.

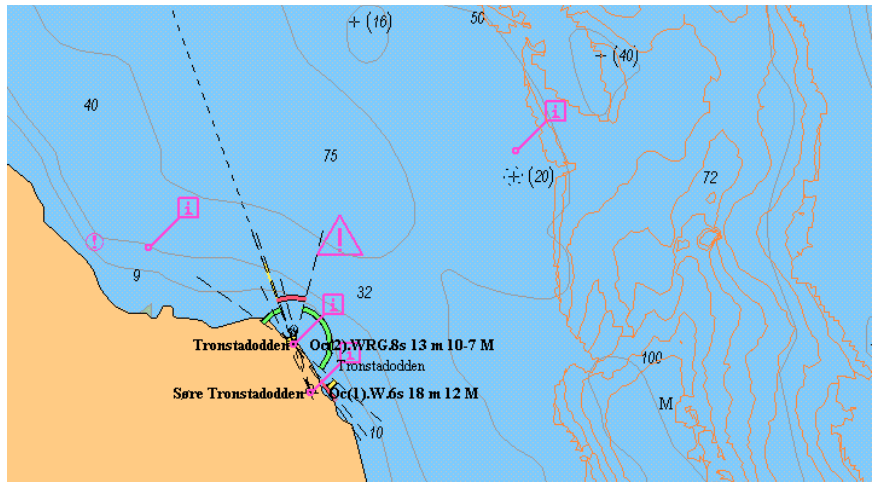
DISPLAYING A SITE MAP ON THE CHART

The operator can choose how to display a site map. Site map lines can be shown in different colours for better contrast, using for example ECDIS colour (orange) or black lines.

It is also possible to define the visibility and contrast of the chart beneath the overlaid site map. The site maps can be shown on the chart with no background, transparent background or white background.

No background

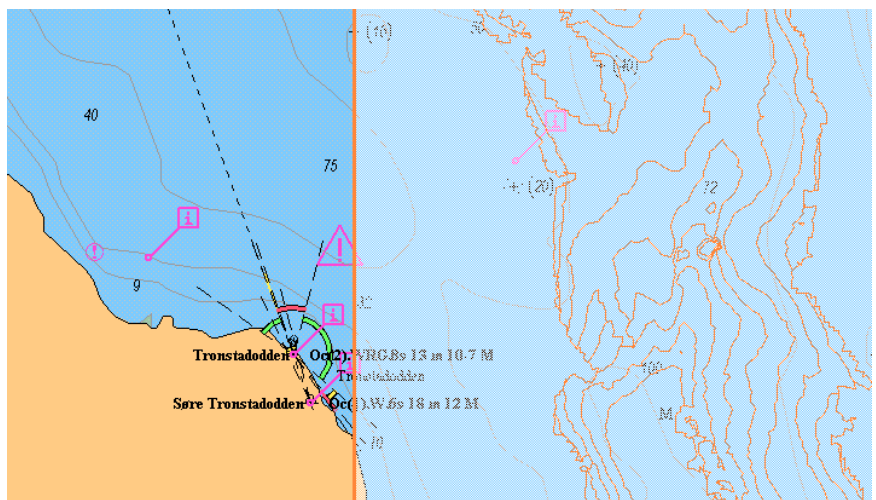
In this picture, the site map has no background. Both the site map lines and the chart information are equally visible.



Transparent background

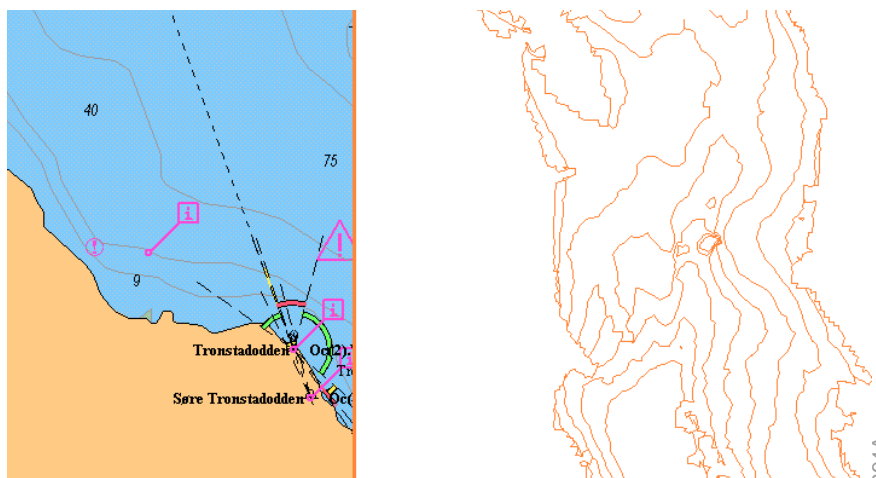
Chart information beneath this site map is visible but in lower contrast. The site map has transparent background.

This is useful for viewing a depth-contour site map with adjacent coastline showing but de-emphasized beneath it.



White background

This site map has a white background that covers all chart information beneath it. This view shows the site map more clearly.



405894A