

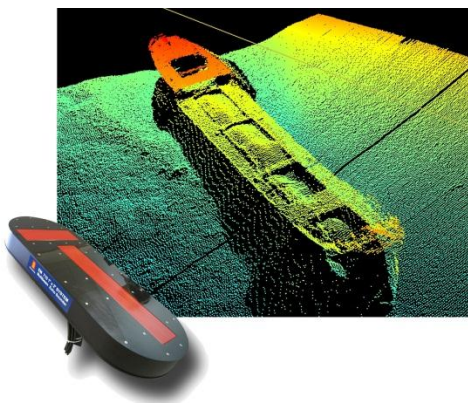


Training Course

SIS Control Software for EM multibeam

Course ID EMSIS-0201

Control of Kongsberg multibeam echosounders by their native data acquisition and control software SIS (Seafloor Information System)



Course Summary

Students will be introduced into the working principle of a multibeam and will be enabled to startup an "EM" multibeam, supervise its performance and control the sounder.

Target Users

Beginners with little or without any previous knowledge that are going to use SIS as a multibeam controller and use 3rd party software for data acquisition.

Course Content

- **Concept and working principle of multibeam echosounders:** Difference single beam – multibeam – sidescan, working principle of multibeam, required sensors, echo sounder setup (processing/transceiver unit, transducer, operator station)
- **Multibeam specification:** Required sensors and input incl. required accuracies: GPS, motion sensor, compass, time
- **Alignment survey** incl. required accuracies.
- **Installation examples:** Shallow and deep water systems.
- **SIS Introduction (controller version):** Dongle, configuration, operation, data acquisition, water column logging, startup, connection to echo sounder, launchpad, introduction to all SIS frames, replay.
- **SIS exercises:** configuration, installation – and runtime parameters, user interface, various SIS frames incl. Numerical Display, Seabed Image, Water Column, etc...
- **Raw data file format** *raw.all
- **This course does neither cover multibeam calibration nor usage of SIS as hydrographic data acquisition and survey software!**

Entry requirements

Good Windows knowledge

Training setup

Combination of theory, demonstrations and exercises

Language

Course is offered in German and English. Course documentation available in both languages.

Course duration

2 days

Number of participants

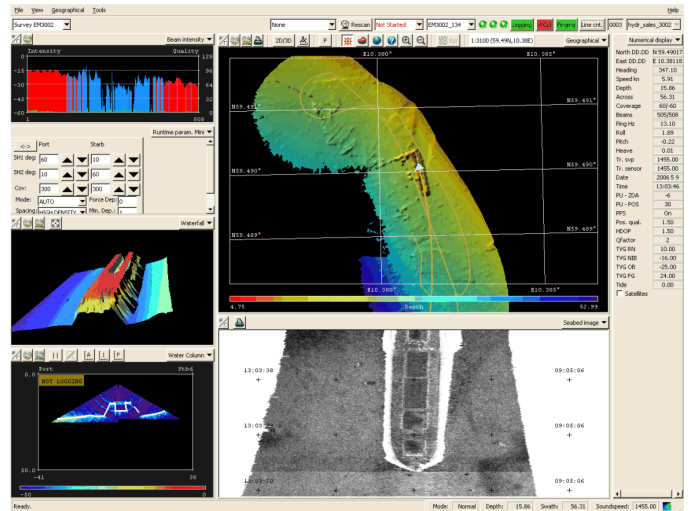
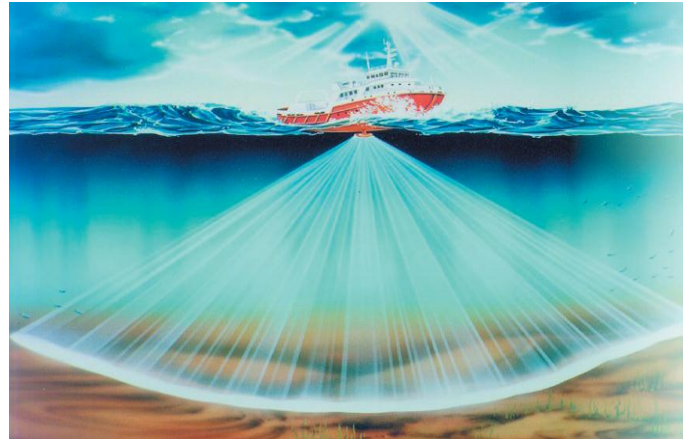
Max. 10 students

Location

- Training center Kongsberg Maritime GmbH, Hamburg
- Customer location if previously agreed upon

Other requirements

- Customer must provide training PCs, projector and screen if training course is run in customer's location.



Registration

Contact:
 Coordinator Subsea Training
 Kongsberg Maritime GmbH
 Hellgrundweg 109, 22525 Hamburg
 ph.: +49 40 54 73 46 – 0, fax +49 40 54 73 46 – 99
 e-mail: km.hamburg@kongsberg.com

Confirmation

The course coordinator confirms the registration which is then binding.

Cancellation / Shifting

Required in written form.

Fees:

Cancellation/shifting more than 4 weeks in advance:

Free of charge

Cancellation/shifting 2 to 4 weeks before start of training: *50% of quoted price*

Cancellation/shifting less than 2 weeks before start of training: *100% of quoted price*

WORLD CLASS – trough people, technology and dedication

www.km.kongsberg.com

Kongsberg Maritime GmbH
 Hellgrundweg 109
 22525 Hamburg
 Germany
 E-Mail: km.hamburg@kongsberg.com
 Tel.: +49 40 54 73 46 - 0