

# AutoChief® 600 Pushbutton Telegraph (PBT)



KONGSBERG

## Description

Push Button Telegraph (PBT) unit provides a simple sub telegraph system for the engine room. Communication is established between the bridge, the engine room and local stand via the telegraph system.

Sub-Telegraph and Command transfer functions are similar to the AutoChief®600 Lever Telegraph Unit (LTU)

## Available control locations

- Bridge
- Engine control room (ECR)
- Optional, other locations

## Functions

### Telegraph positions

The following 11 telegraph steps are indicated with light diodes:.

- Ahead: Dead slow, slow, half, full, navigation full
- Stop
- Astern: Dead slow, slow, half, full, emergency astern

### Command transfer

Buttons are used for both indicating current command position and command transfer.

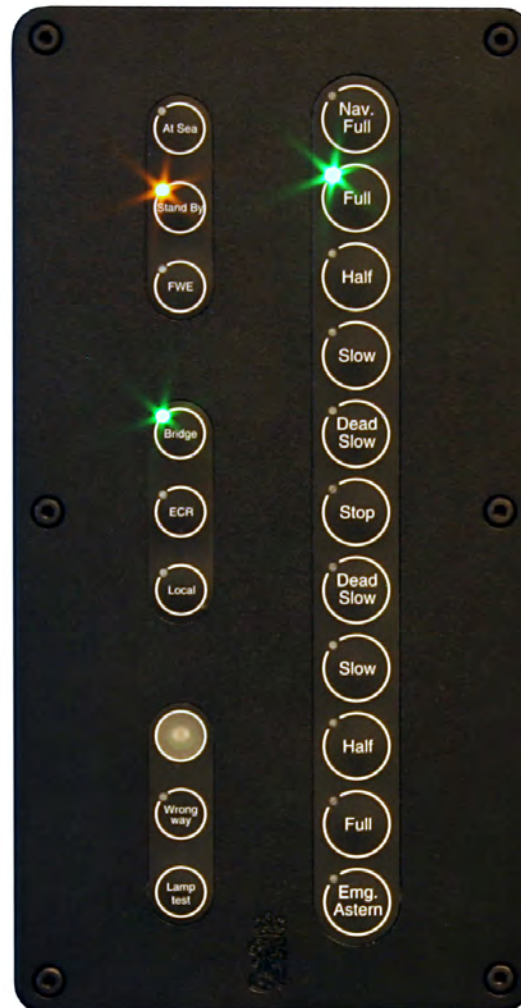
### Sub telegraph modes

The sub-telegraph functions are used to inform the engine crew about their state of alert, and subsequent need for propulsive and electric power.

- Finished with engine (FWE)
- Stand-by
- At sea

### Wrong Way indicator

The PBT is equipped with a Wrong Way indicator. The alarm is released if the engine does not rotate in ordered direction, while in engine room control.



## Technical Specifications

### Supply voltage

- 18 - 32 VDC

### Power consumption

- 6W (all LED active)

### Operating temperature

- -15°C to +70°C

### Storage temperature

- -25°C to +70°C

### Max rel. Humidity

- 96% non-condensing

### IP Code

- IP44

### ENV properties

- IACS E10
- IEC 60945

### Vibration

- 4 G

### Weight of unit

- 0.8 kg

### Mounting

- Screws (6 pcs M5)

### Connections, pluggable screw terminals

- I/O 3 terminals 2.5mm<sup>2</sup>
- Power 4 terminals 2.5mm<sup>2</sup>
- CAN bus 4 terminals 2.5mm<sup>2</sup>

### Signal types

- Digital Output (24V on/off max 0.5A)
- Emg. switch contact normally open.

### Communication interfaces

- 2 CAN ports for communication with host.

### Isolation

- Power: Isolated/floating from module chassis.
- Output: Isolation between channels (relays)
- CAN: Individually isolated.

### BIST (Built In Self Test)

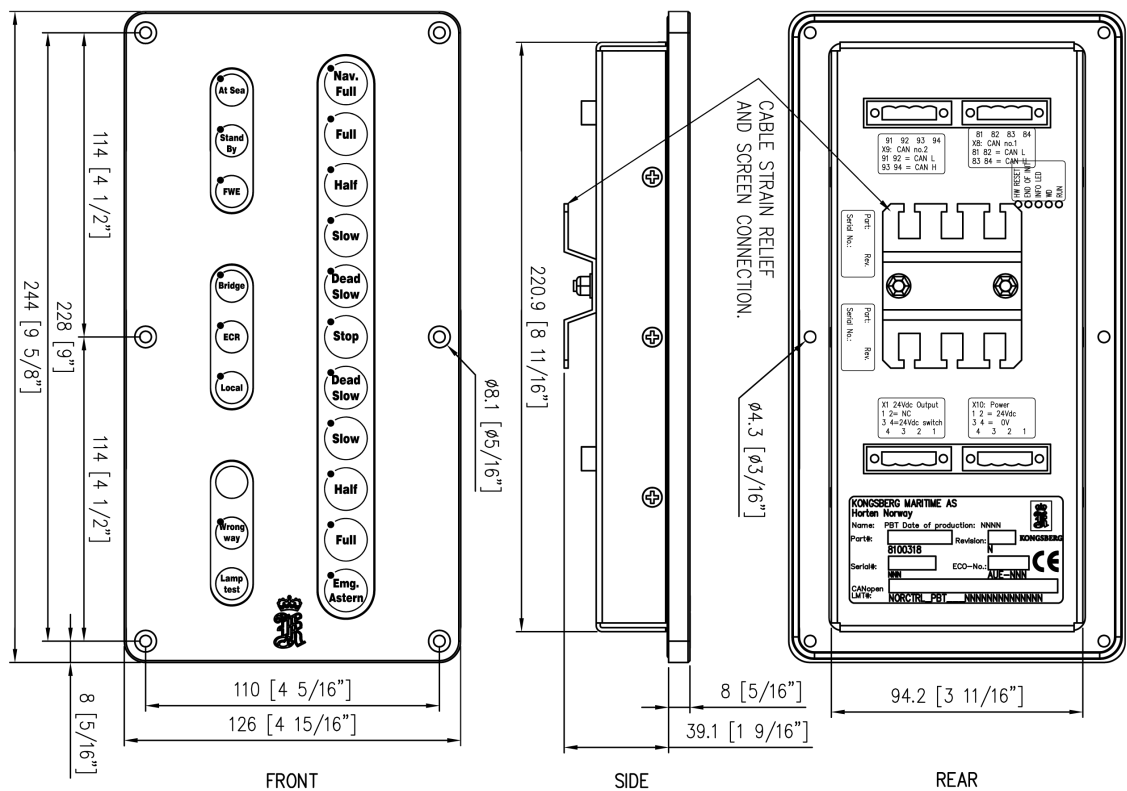
- Module temperature

### Type Approval

- DNV, LRS, BV, GL, RINA, NK, ABS, KR, RMR, CCS (allows direct mounting on engines, compressors, etc. in suitable cabinets)

### Part number

- 8100318



Copyright © 2013 Kongsberg Maritime AS – All rights reserved

Specifications may be subject to change without prior notice

330199 B

### Kongsberg Maritime AS

Bekkajordet 8A  
 P.O.Box 1009  
 NO-3189 Horten  
 Norway

Telephone: +47 815 73 700  
 Telefax: +47 850 28 028  
[www.kongsberg.com](http://www.kongsberg.com)  
 km.sales@kongsberg.com



**KONGSBERG**