

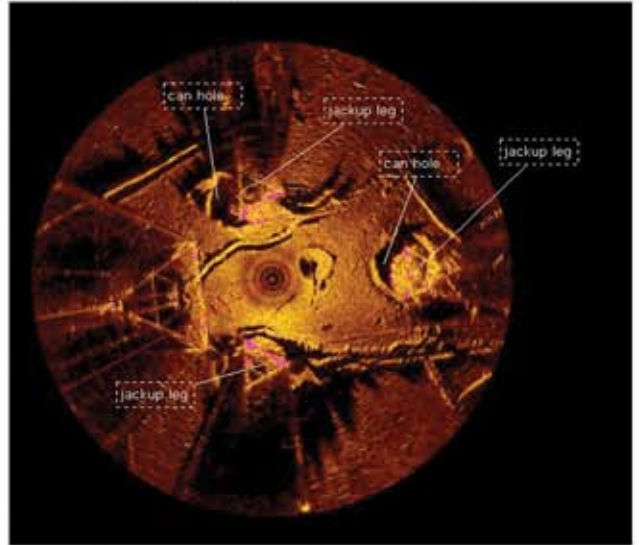
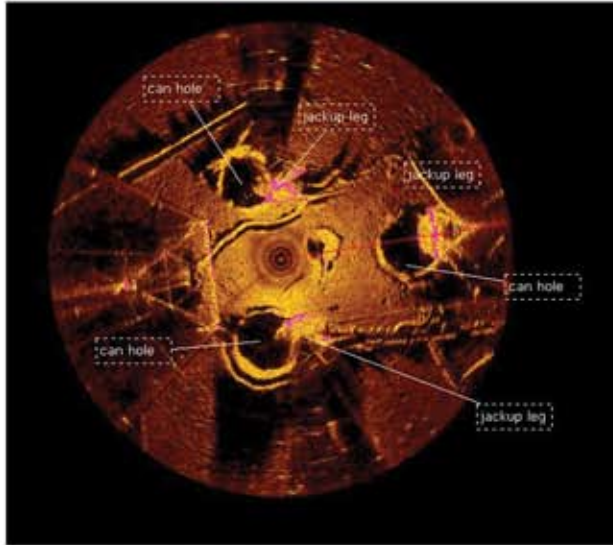


Scanning Sonar Utilized to Position a Jack-up Drilling Rig's Legs Into Existing Can Holes

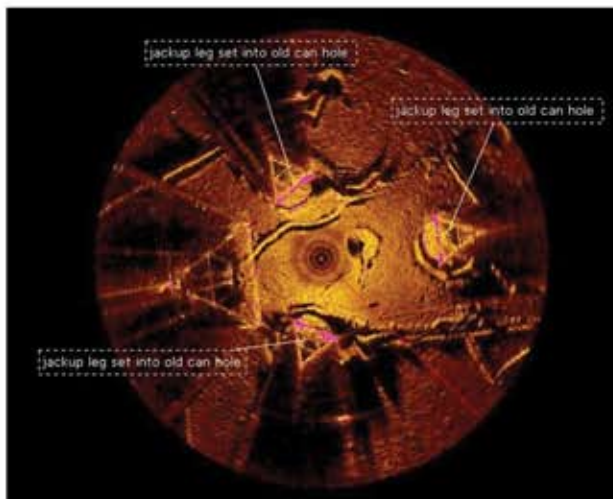
1

Records courtesy Royal Services and Rentals, Inc.

2



3



Jack-up Rig on location

High Resolution Scanning Sonar and Deployment Tripod

Equipment requirements:

- MS 1000 Software-based Scanning Sonar (and computer)
- 675 kHz High Resolution Scanning Sonar Head with Fan-- Beam Imaging Transducer
- Deployment Tripod
- Kevlar Deployment Cable

To place the jack-up rig on location the sonar is tripod mounted and lowered to the seabed where it is used to identify the can-hole depressions on the seafloor and guide the rig legs into these depressions, as shown in sonar images 1,2,3.