



KONGSBERG

TECHNICAL INFORMATION

MS1000 USB Telemetry Interface/Power Supply Unit

P/N 901-60150000

Specifications subject to change without notice
901-60157902

KONGSBERG MESOTECH LTD. 1598 Kebet Way, Port Coquitlam B.C. Canada V3C 5M5
Tel: (604) 464 8144 Fax: (604) 941 5423

KONGSBERG MESOTECH LTD.

WARRANTY STATEMENT

Effective January 1, 2006

Kongsberg Mesotech Ltd. warrants that its products are free from defective materials and/or workmanship for a period of 24 months from the date of receipt of goods by the end user, or 30 months from date of product shipment from the manufacturing facility (whichever occurs first). Kongsberg Mesotech Ltd. will - at no charge - repair or replace (at its option) any part(s) determined to be defective of workmanship or materials, provided the warranty claim is made to either the manufacturing facility or its authorized repair centres within the warranty period.

The purchaser is responsible for the examination of the product upon receipt. The purchaser is required to report any irregularity to received Kongsberg Mesotech Ltd. goods to either the manufacturer, its Sister companies or its Agents, within 15 days of receipt of goods. Proof of date received may be required.

The warranty is void if warranty labels are broken; Kongsberg Mesotech Ltd. will not warrant any product which is physically damaged, abused, altered, subjected to accident or negligence or misuse, or is incorrectly installed or used by the purchaser - or purchaser's representative.

Consumable items (including lamps, fuses, and worn O rings or shaft-seals) are excluded by the warranty.

All Product/Equipment being returned for warranty, repair/replacement shall have freight costs "prepaid". All warranty Product/Equipment being returned to the customer will be freight charges "prepaid" by Kongsberg Mesotech Ltd.

NOTE: Shipping method and carrier for warranty returned items will be at the discretion of Kongsberg Mesotech Ltd.

A Kongsberg Mesotech Ltd. Warranty Claim form must be completed and submitted to KML Service Department prior to warranty claim acceptance.

Kongsberg Mesotech Ltd. cannot warrant that its products are suitable for any particular or intended purpose. No other warranty is expressed or implied; Kongsberg Mesotech Ltd. accepts no liability on consequential damages – these include, but are not limited to: loss of profit, property damage and personal injury.

The maximum liability shall not, in any case, exceed the price of the product claimed to be defective.

MS1000 USB Telemetry Interface/ Power Supply Unit



KONGSBERG

P/N 901-60150000

The MS1000 USB Telemetry Interface/Power Supply Unit provides the interface between the USB port of a desktop or laptop PC running the MS1000 software processor and Kongsberg Simrad Mesotech RS485 **digital** telemetry sonar heads. It also provides a supply voltage to the head for operation over a short cable. The cable length should be selected such that the voltage drop across the cable will not exceed 4VDC during sonar operation.

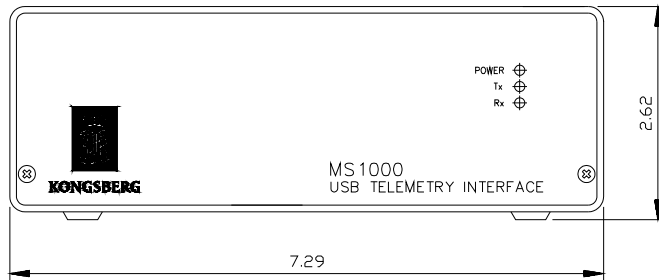
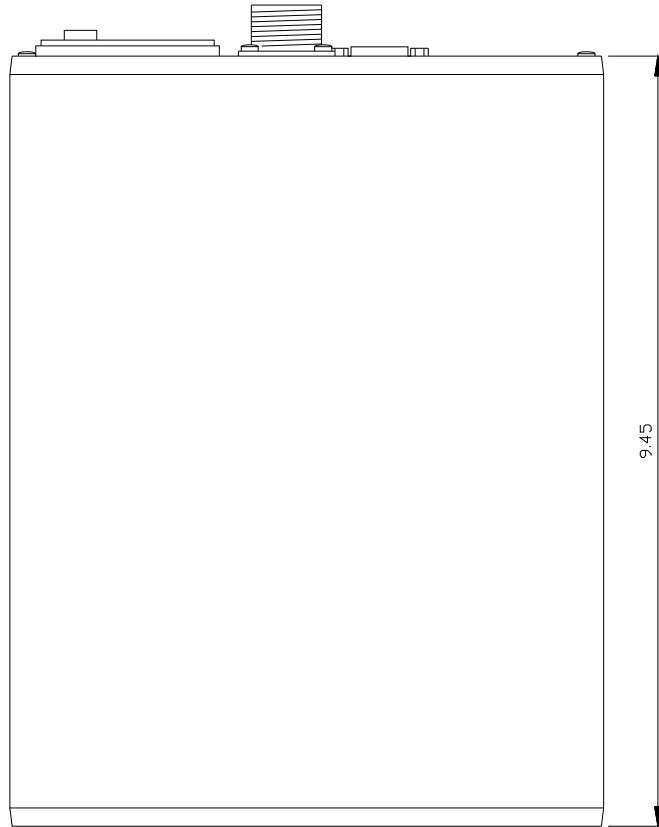
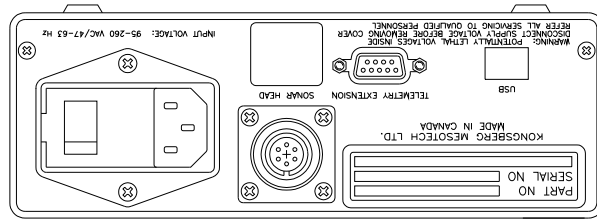
Input Voltage	95 to 260 VAC / 47 to 63 Hz
Output Voltage	26VDC @ 2A
PC Telemetry Interface	USB
Head Telemetry Interface	RS485
Downlink Data Rate	Up to 460 kbps (as configured in the MS1000 software)
Uplink Data Rate	Up to 460 kbps (as configured in the MS1000 software)
LED Indicators	Power, Tx, Rx
Temperature Range	0° to 40°C operating 0° to 50°C storage
Dimensions	Height 2.62"/67mm Width 7.29"/185mm Depth 9.45"/240mm (excluding connectors)
Weight:	3.6 lbs/1.6 kg

Specifications subject to change without notice

P/N 901-60157901 Iss 1.1

KONGSBERG MESOTECH LTD. 1598 Kebet Way, Port Coquitlam B.C. Canada V3C 5M5

Tel: (604) 464 8144 Fax: (604) 941 5423



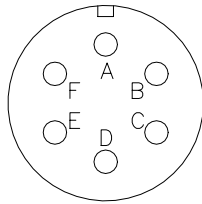
Specifications subject to change without notice

P/N 901-60157901 Iss 1.1

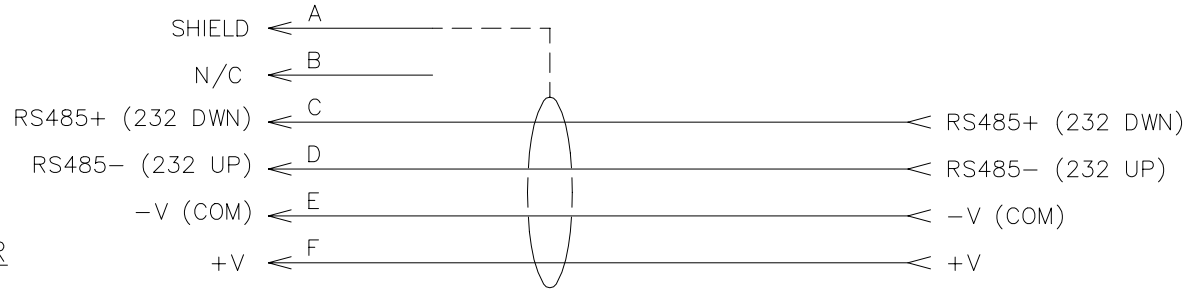
KONGSBERG MESOTECH LTD. 1598 Kebet Way, Port Coquitlam B.C. Canada V3C 5M5

Tel: (604) 464 8144 Fax: (604) 941 5423

DIGITAL TELEMETRY



PROCESSOR CONNECTOR
MS3106A-14S-6P (PIN VIEW)



NOTE:

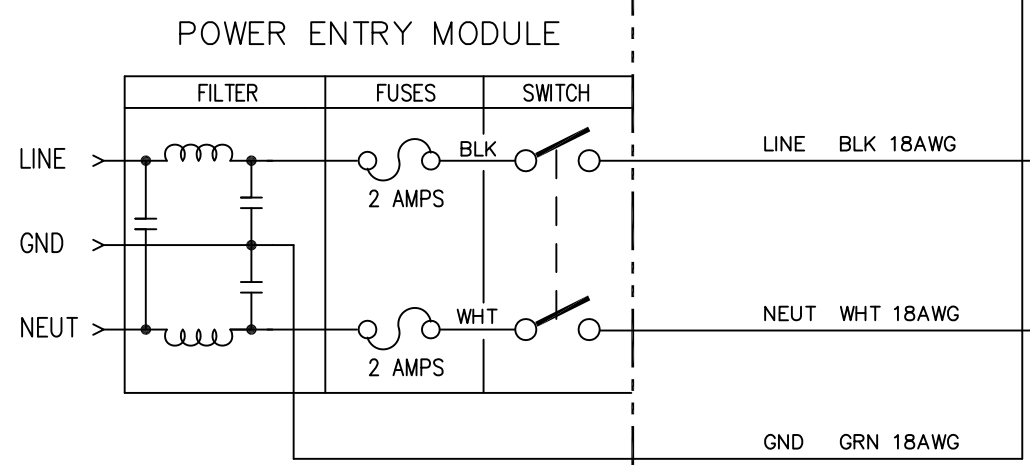
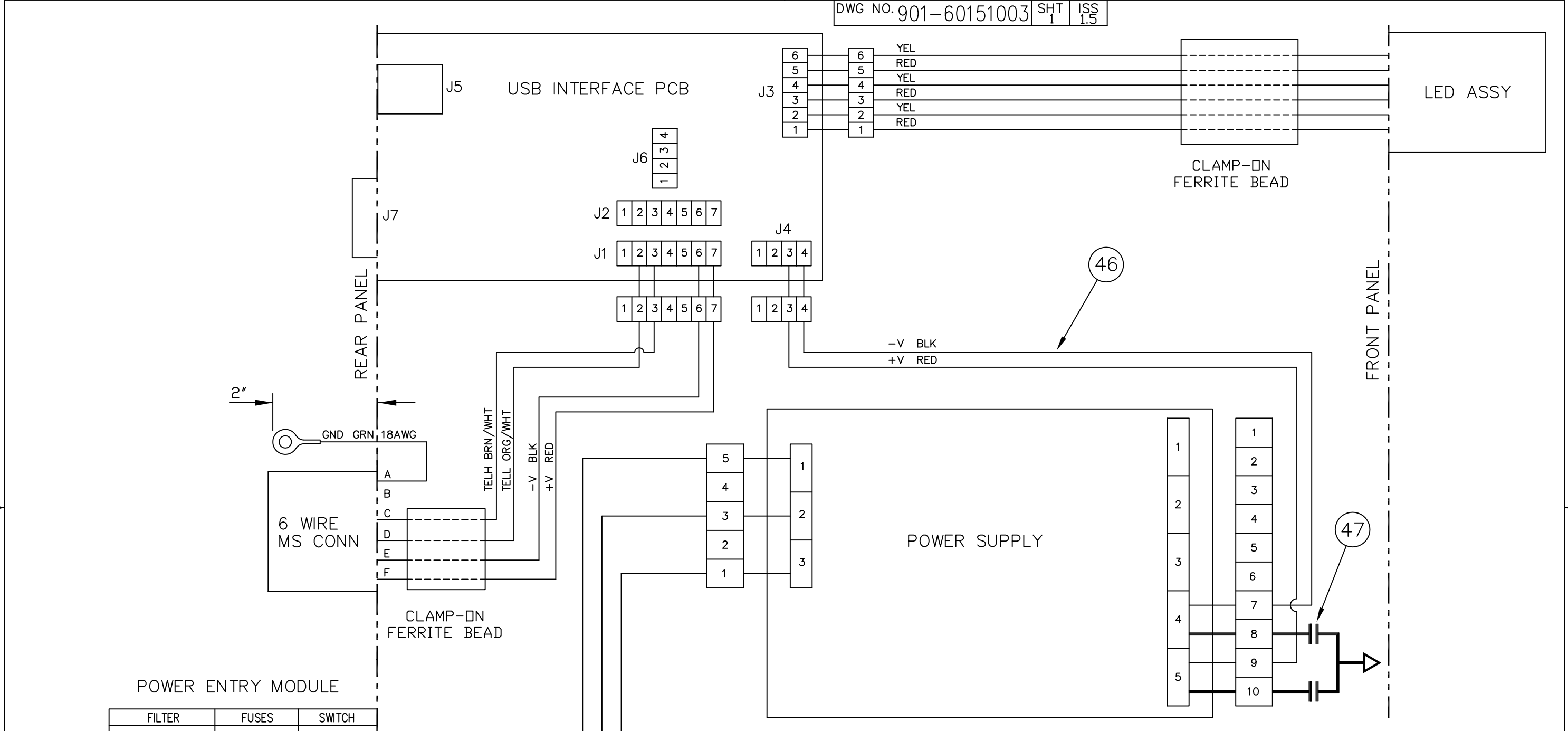
IF THE HEAD IS NOT POWERED FROM THE PROCESSOR, CONNECT THE +/-V TERMINALS OF THE HEAD TO A SUITABLE EXTERNAL POWER SUPPLY AND DISCONNECT THE F TERMINAL ON THE PROCESSOR CONNECTOR (-V HAS TO CONNECT TO THE EXTERNAL SUPPLY AS WELL AS TERMINAL E OF THE PROCESSOR CONNECTOR).

ZONE	ISS	DESCRIPTION	DATE	APPROVED
REVISIONS				

<p><u>PROPRIETARY NOTICE</u> THIS DOCUMENT CONTAINS INFORMATION WHICH IS THE SOLE PROPERTY OF KONGSBERG MESOTECH Ltd. AND IS RECEIVED IN CONFIDENCE. ITS CONTENTS MAY NOT BE DISCLOSED OR REPRODUCED IN ANY WAY WITHOUT THE WRITTEN CONSENT OF KONGSBERG MESOTECH Ltd.</p>	<p>APPROVALS</p>		<p>DATE</p>		<p>Kongsberg Mesotech Ltd.</p>				
	<p>DRAWN J.BANSER</p>		<p>11MAY00</p>						
	<p>CHECKED</p>		<p>ENGR</p>		<p>PROCESSOR - HEAD INTERCONNECTION RS485/232 DIGITAL TELEMETRY</p>				
	<p>ISSUED</p>		<p>NEXT ASSY</p>						<p>SIZE</p>
	<p>ZONE</p>		<p>MODEL</p>		<p>A</p>	<p>1C965</p>	<p>MD</p>	<p>436-00001201</p>	<p>1.0</p>



SCALE: - | W.O. NO. | SHEET 1 OF 1



PROPRIETARY NOTICE - THIS DOCUMENT CONTAINS INFORMATION WHICH IS SOLE PROPERTY OF KONGSBERG MESOTECH LTD AND IS RECEIVED IN CONFIDENCE. ITS CONTENTS MAY NOT BE DISCLOSED OR REPRODUCED IN ANY WAY WITHOUT WRITTEN CONSENT OF KONGSBERG MESOTECH LTD.

APPROVALS	DATE
DRAWN DL	04/11/10
REVISED BH	2014 MAY 12
CHECKED	
ENGR	
ISSUED	
CONFIDENTIAL DO NOT COPY	

ISS	DESCRIPTION	DATE
1.5	ECO 5299	2014 MAY 12
1.4	ECO 4949	2012 MAY 10
1.3	ECO 4602	10/02/02

REVISIONS
Kongsberg Mesotech Ltd.

SIZE	NSCM NO	TYPE	DWG NO.	ISS
B	1C965	MD	901-60151003	1.5
SCALE: NTS		W.O. NO.		SHEET 1 OF 1

DO NOT SCALE DRAWING