

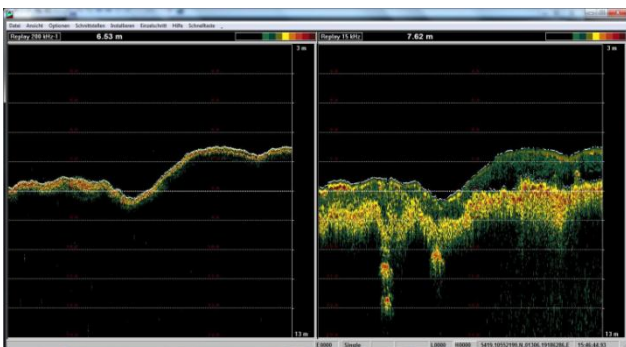
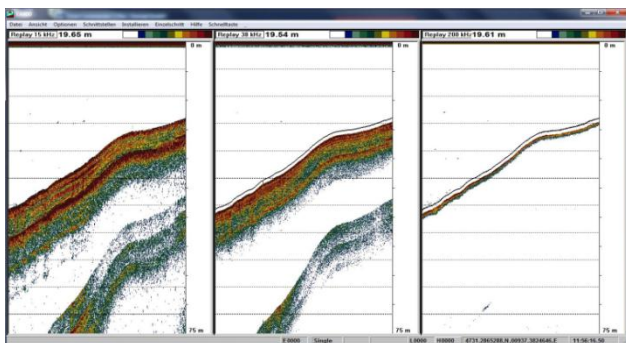
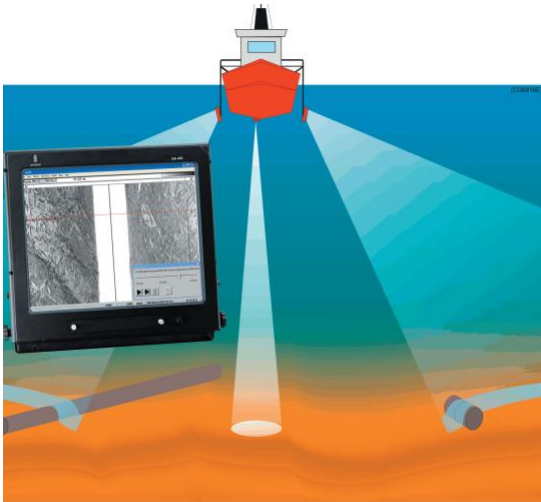


Training Course

Single Beam EA 400/600

Course ID EA-0101

Commissioning, control and operation of the EA 400/600 single beam and sidescan echosounder by its native EA software



Course Summary

Students will be enabled to commission an EA400/600, control the echo sounder with its native software and perform surveys.

Target Users

Beginners with and without previous knowledge that want to run the EA 400/600 stand alone or with third party acquisition software.

Course Content

- **Concept and operation of single beam echosounder:** Difference single beam - sidescan, operation of single beam and sidescan mode, required sensors, sounder setup (hardware, operator station)
- **Specification EA 400:** Configuration options, available frequencies, required and optional data input and output, required and optional sensors: Positioning, mru, compass, time. Difference EA 400 / EA 600.
- **Configuration** of echosounder in operator software
- **Operation of EA software:** User interface, single beam and sidescan display, software configuration.
- **EA 400 exercises** with with customer or Kongsberg data.
- **Raw data file format *.raw**

Entry requirements

Good Windows knowledge

Training setup

Combination of theory, demonstrations and exercises

Language

Course is offered in German and English. Course documentation available in both languages.

Course duration

1 day

Number of participants

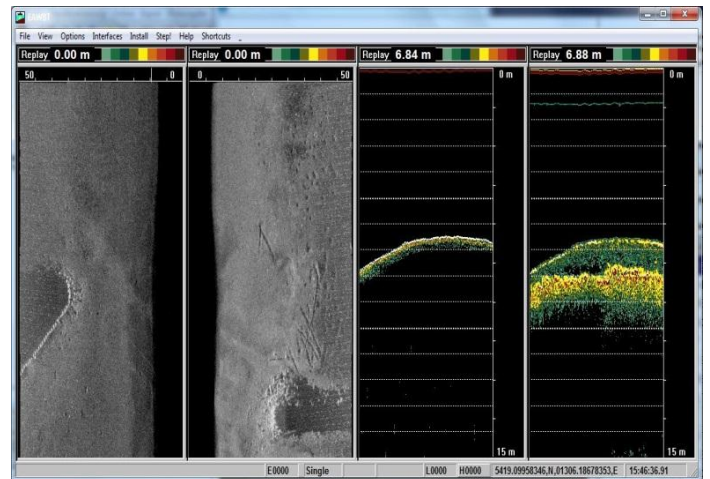
Max. 10 students

Location

- Training Center Kongsberg Maritime GmbH, Hamburg
- Customer location if previously agreed upon

Other requirements

Customer must provide training PCs, projector and screen if training course is run in customer's location.



Registration

Contact:

Coordinator Subsea Training
Kongsberg Maritime GmbH
Hellgrundweg 109, 22525 Hamburg
ph.: +49 40 54 73 46 – 0, fax +49 40 54 73 46 – 99
e-mail: km.hamburg@kongsberg.com

Confirmation

The course coordinator confirms the registration which is then binding.

Cancellation / Shifting

Required in written form.

Fees:

Cancellation/shifting more than 4 weeks in advance:

Free of charge

Cancellation/shifting 2 to 4 weeks before start of training: *50% of quoted price*

Cancellation/shifting less than 2 weeks before start of training: *100% of quoted price*

WORLD CLASS – trough people, technology and dedication

www.km.kongsberg.com

Kongsberg Maritime GmbH
Hellgrundweg 109
22525 Hamburg
Germany
E-Mail: km.hamburg@kongsberg.com
Tel.: +49 40 54 73 46 - 0