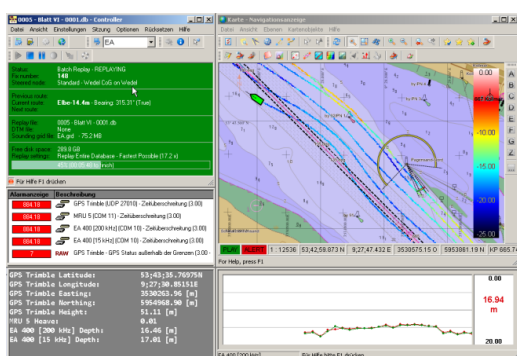


Training Course

EA 400 and QINSy for Single Beam Echosounders

Course ID: EAQIN-0401

Introduction to operation of the EA 400 single beam echosounder and hydrographic software QINSy



Course Summary

Students will be enabled to operate an EA 400, run an EA 400 survey with QINSy and post process the data in QINSy.

Target Users

Beginners with little or without knowledge, who want to run EA 400 surveys with QINSy.

Course Content

- **Concept and operation of the EA 400:** Difference and working principle of single beam and sidescan systems, required sensors, echosounder setup (hardware, operator station).
- **Specification EA 400:** configuration options, available frequencies, required and optional data input, required and optional sensors: GPS, motion sensors, compass, time. Difference to EA 600.
- **Echosounder configuration** via EA 400 software.
- **Operation of EA 400 software:** User interface, single beam and sidescan display, software configuration.
- **EA 400 exercises** with customer or Kongsberg data.
- **Raw data file format *.raw**
- **Introduction to hydrographic software QINSy:** Applications, software overview.
- **Conditions for single beam surveys:** Possible setups – Advantages and disadvantages.
- **QINSy survey planning**
- **QINSy survey execution:** Logging options, survey control, survey layout options and configuration.
- **QINSy processing:** Position processing, visualisation, printing, export, raw data inspection.
- **QINSy template:** Setups and configuration

Entry requirements

Good Windows knowledge

Training setup

Combination of theory, demonstrations and exercises

Language

Course is offered in German and English. Course documentation available in both languages.

Course duration

4 days

Number of participants

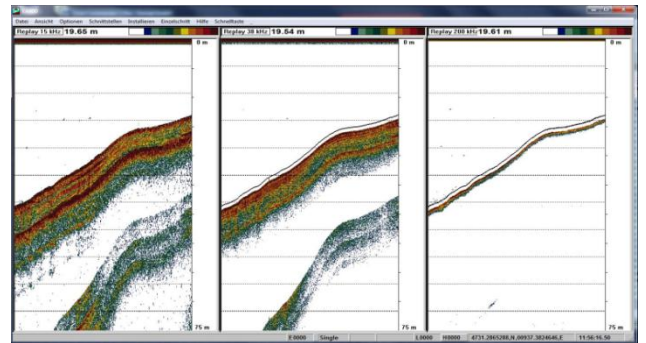
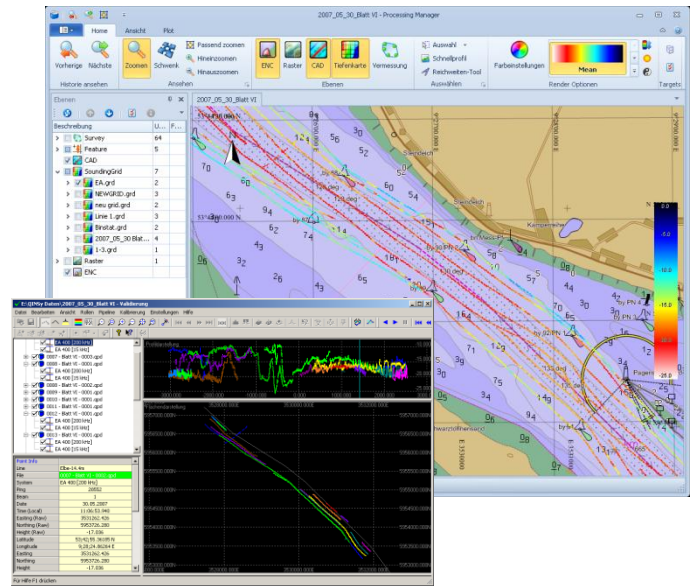
Max. 10 students

Location

- Training Center Kongsberg Maritime GmbH, Hamburg
- Customer location if previously agreed upon

Other requirements

- Customer must provide training PCs, projector and screen if training course is run in customer's location.



Registration

Contact:

Coordinator Subsea Training
 Kongsberg Maritime GmbH
 Hellgrundweg 109, 22525 Hamburg
 ph.: +49 40 54 73 46 – 0, fax +49 40 54 73 46 – 99
 e-mail: km.hamburg@kongsberg.com

Confirmation

The course coordinator confirms the registration which is then binding.

Cancellation / Shifting

Required in written form.

Fees:

Cancellation/shifting more than 4 weeks in advance:

Free of charge

Cancellation/shifting 2 to 4 weeks before start of training: *50% of quoted price*

Cancellation/shifting less than 2 weeks before start of training: *100% of quoted price*

WORLD CLASS – trough people, technology and dedication

www.km.kongsberg.com

Kongsberg Maritime GmbH
 Hellgrundweg 109
 22525 Hamburg
 Germany
 E-Mail: km.hamburg@kongsberg.com
 Tel.: +49 40 54 73 46 - 0