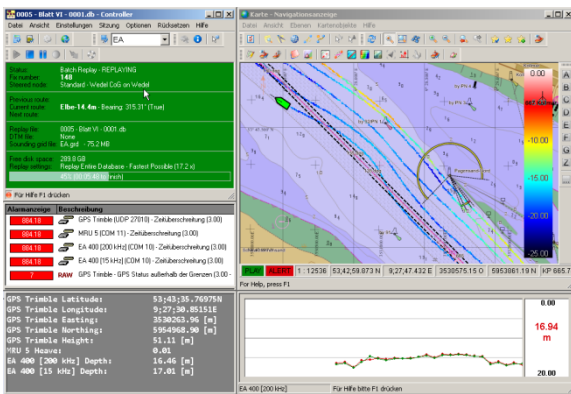


# Training Course

## QINSy for Single Beam Surveys

Kurs ID QINSB-0301

### Introduction into single beam surveys with QINSy



### Course Summary

Students will be enabled to perform and post process single beam surveys with QINSy. The course does not cover the EA 400 single beam echosounder or its operator software.

### Target Users

Beginners with little or without any previous knowledge that want to use QINSy as hydrographic software package with a single beam echo sounder.

Knowledge about the EA 400 single beam is beneficial.

### Course Content

- **Introduction to hydrographic software QINSy:** Applications and software overview.
- **Conditions for single beam surveys:** Logging and interface setups – advantages and disadvantages.
- **QINSy survey planning**
- **QINSy survey execution:** Logging options, survey control, survey layout options and configuration.
- **QINSy processing:** Positionprocessing, visualisation, print options, export, Raw data inspection.
- **QINSy template:** Setups and configuration
- **This course does not cover the EA 400 and its operator software!**

## Entry requirements

Good Windows knowledge

EA 400 experience recommended

## Training setup

Combination of theory, demonstrations and exercises

## Language

Course is offered in German and English. Course documentation available in both languages.

## Course duration

3 days

## Number of participants

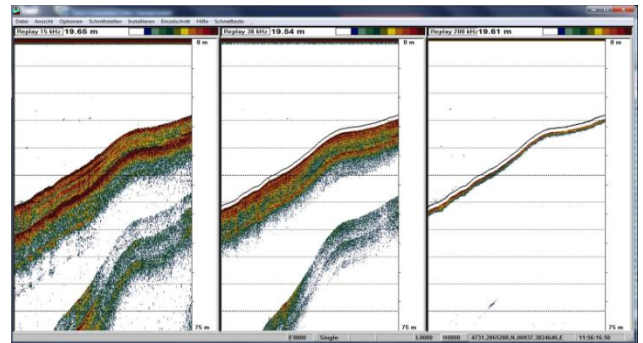
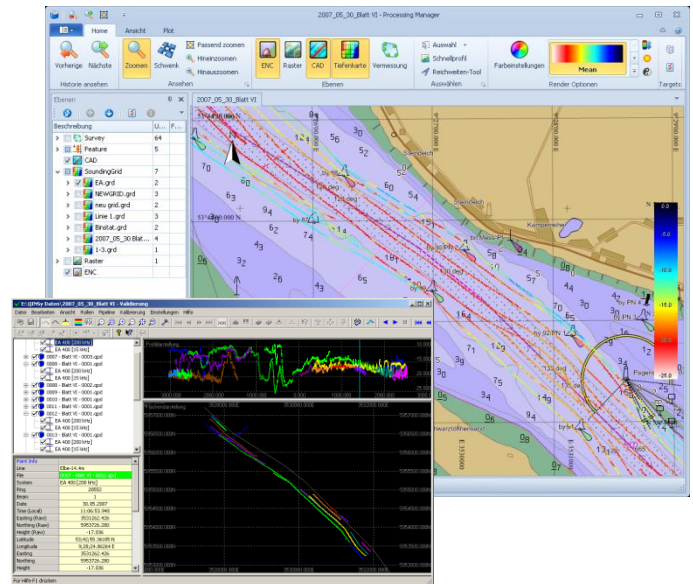
Max. 10 students

## Location

- Training Center Kongsberg Maritime GmbH, Hamburg
- Customer location if previously agreed upon

## Other requirements

- Customer must provide training PCs, projector and screen if training course is run in customer's location.



## Registration

Contact:

Coordinator Subsea Training  
Kongsberg Maritime GmbH  
Hellgrundweg 109, 22525 Hamburg  
ph.: +49 40 54 73 46 – 0, fax +49 40 54 73 46 – 99  
e-mail: [km.hamburg@kongsberg.com](mailto:km.hamburg@kongsberg.com)

## Confirmation

The course coordinator confirms the registration which is then binding.

## Cancellation / Shifting

Required in written form.

Fees:

Cancellation/shifting more than 4 weeks in advance:

*Free of charge*

Cancellation/shifting 2 to 4 weeks before start of training: *50% of quoted price*

Cancellation/shifting less than 2 weeks before start of training: *100% of quoted price*

**WORLD CLASS – trough people, technology and dedication**

[www.km.kongsberg.com](http://www.km.kongsberg.com)

Kongsberg Maritime GmbH  
Hellgrundweg 109  
22525 Hamburg  
Germany  
E-Mail: [km.hamburg@kongsberg.com](mailto:km.hamburg@kongsberg.com)  
Tel.: +49 40 54 73 46 - 0