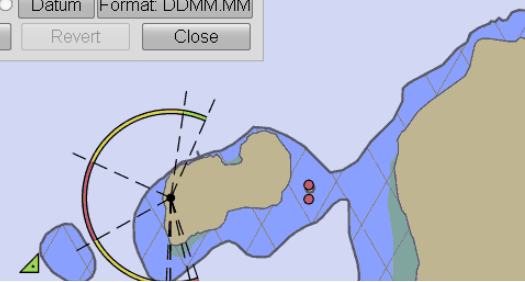
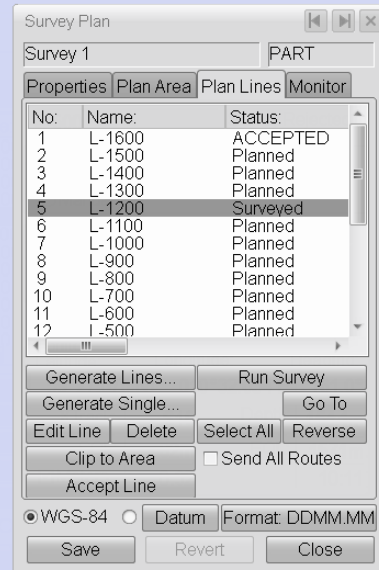
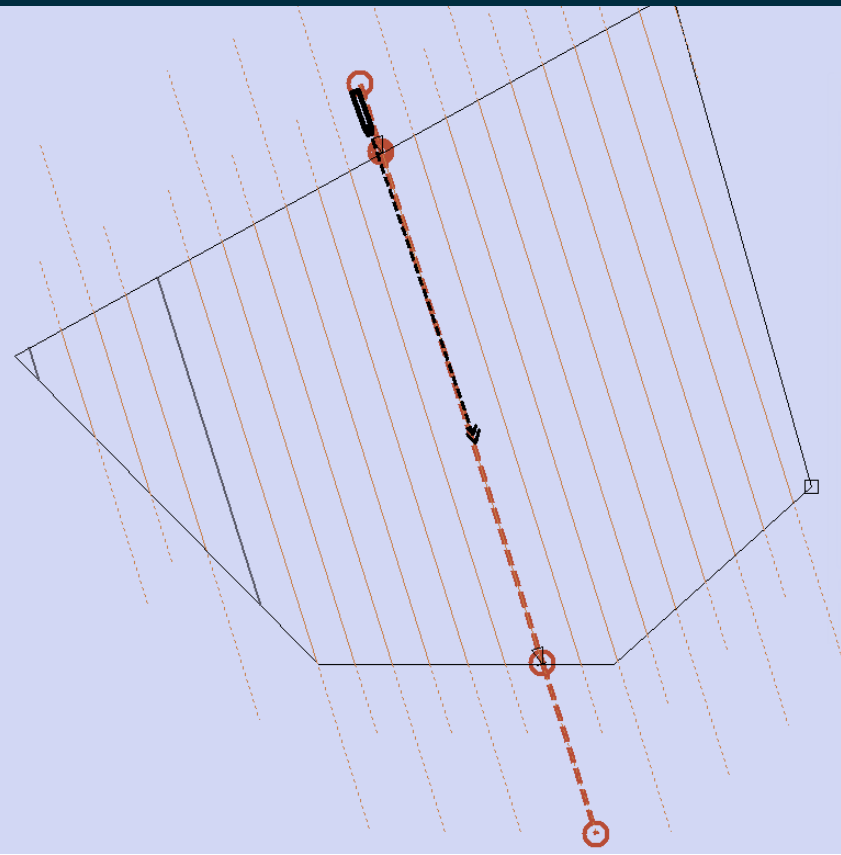


# SURVEY OPTION



KONGSBERG

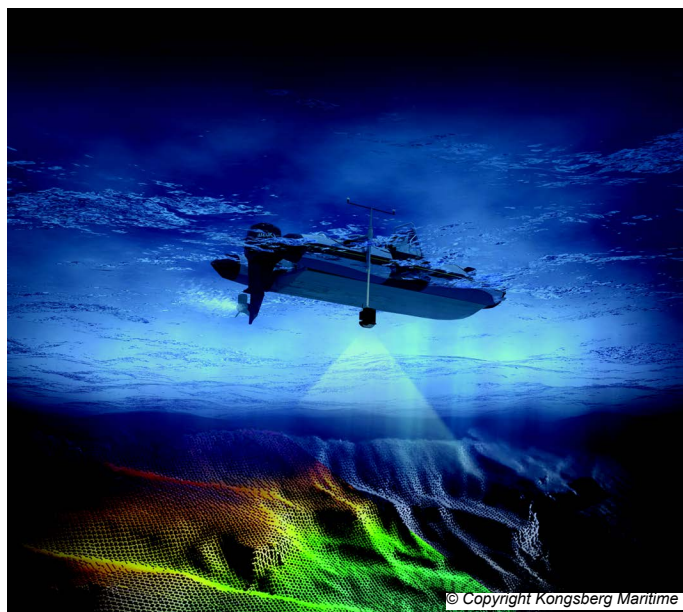


## PLAN AND EXECUTE SURVEYS ON THE K-BRIDGE/K-NAV PLANNING STATION

Monitor survey lines as ECDIS routes (with the autopilot optionally engaged)

### Description

The Survey option for the K-Bridge and K-Nav Planning Station enables you to create survey lines to cover a specified sea area and then monitor survey operations along the survey lines created. The Survey option can be interfaced to a wide range of sonars and echo-sounders from Kongsberg Maritime.



### Benefits

- Simple mouse-driven “freehand” drawing tool for defining survey areas.
- Function for specifying the survey area as a regular circle, ellipse, square or rectangle.
- Survey plans re-usable at new locations on the chart.
- Quick and easy creation of survey lines either in a group covering the whole survey area or individually.
- Automatic creation of run-in and run-out legs.
- Tools for recording the status of surveyed lines and partially surveyed lines.
- Clear indication on the chart of the direction of each line and the point (if any) up to which it has been surveyed.
- Selectable automatic or manual starting and stopping of surveys.
- Sonar coverage area displayable on the chart.
- Automatic monitoring of each survey line as a route on the Planning Station and ECDIS.
- Possibility to engage the autopilot in track mode (or another mode) to keep the vessel on the survey line.

# SAMPLE SURVEY PLANS

## Cartographic survey of Plymouth Harbour

Figure 1 is a picture from a sonar system, showing an area of Plymouth Harbour that has been partially surveyed; an image of the sea-bed in that area is in process of being generated by the sonar system.

Figure 1: Harbour depths indicated by sea-bed terrain imaging

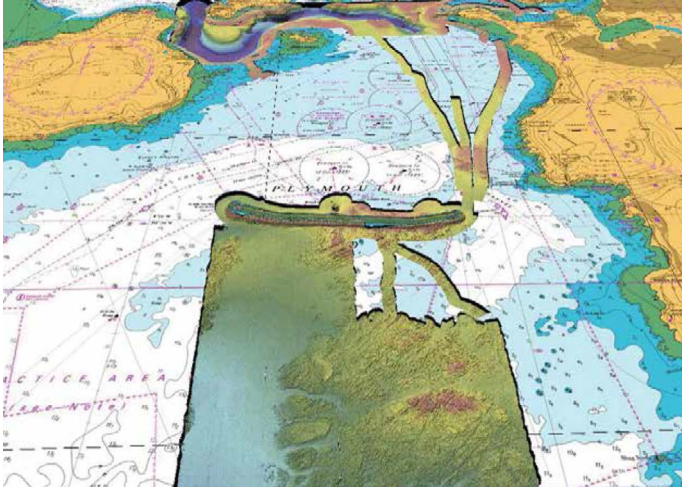
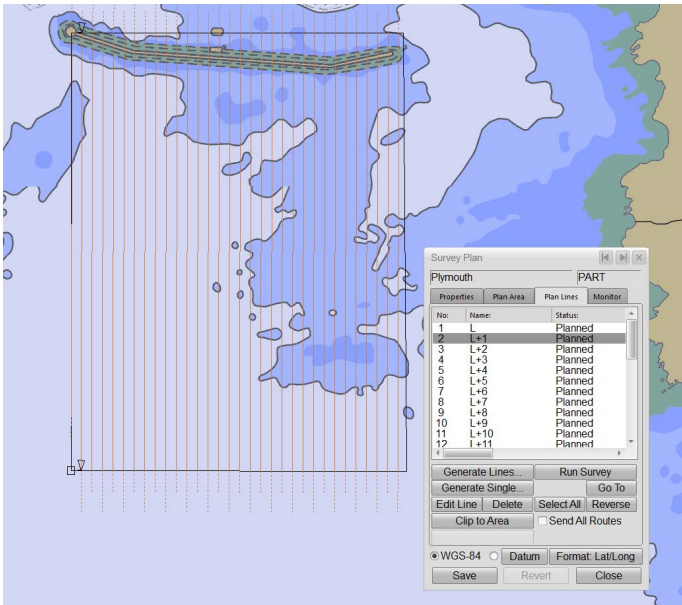


Figure 2 shows a survey plan (defined using the Survey option) that could be used to conduct the survey that is shown in progress in Figure 1.

Figure 2: Sample survey plan for part of Plymouth Harbour



## Dredging survey of Botafoc Harbour

Figure 3 is another picture from a sonar system, this time showing the different depths of the water in the Botafoc Harbour (in Ibiza) before dredging was performed and the harbour wall extended.

Figure 3: Harbour depths indicated by colour

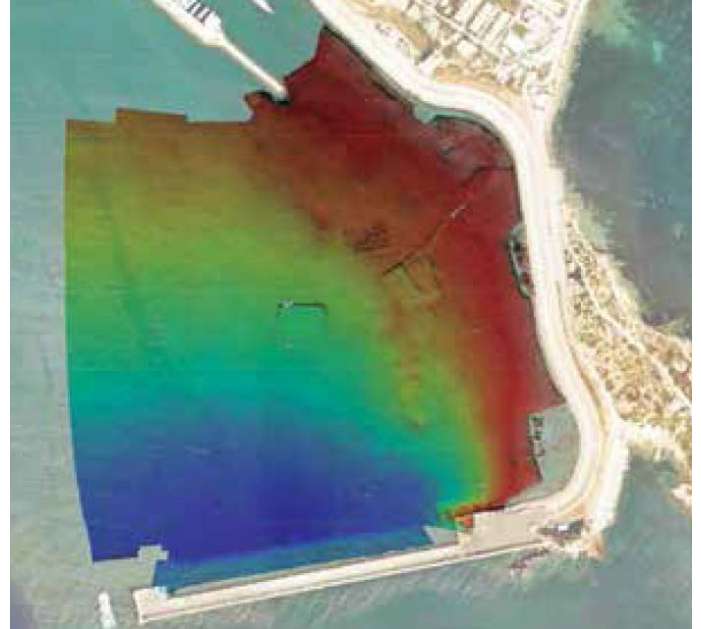
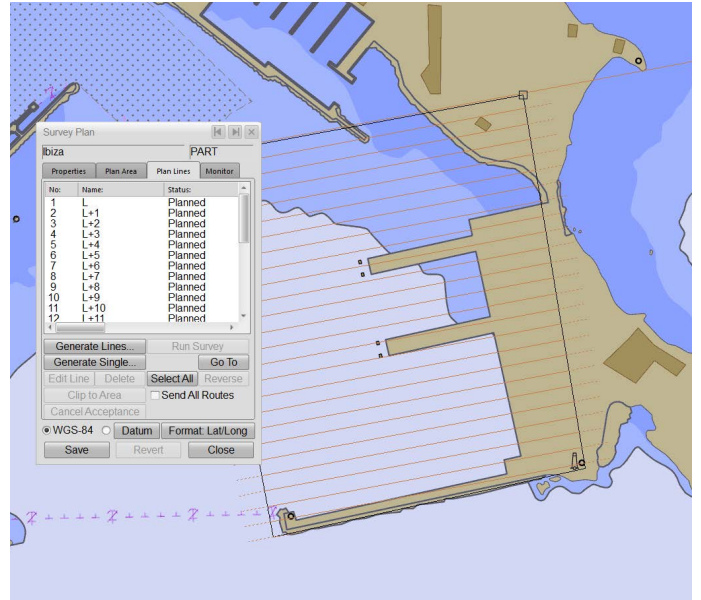


Figure 4 shows a survey plan (defined using the Survey option) that could be used to conduct a survey of the area shown in Figure 3. The extension of the harbour wall has been carried out since the original survey was performed, as can be clearly seen from the chart.

Figure 4: Sample survey plan for Botafoc Harbour



407049A