

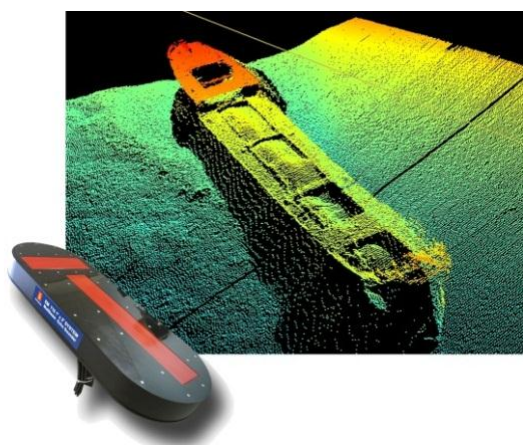


Training Course

Multibeam Surveys with SIS

Course ID EMSIS-0501

SIS multibeam survey software for Kongsberg "EM" echosounders



Course Summary

Students will be introduced into hydroacoustics, echo sounder technology and multibeam specifications. They will be enabled to startup a Kongsberg "EM" multibeam, supervise and control the sounder, perform a survey and export the data.

Target Users

Beginner without or with little previous knowledge that are going to operate multibeams with SIS as survey software.

Course Content

- **Concept and working principle of multibeam echosounders:** Difference single beam – multibeam – sidescan, required sensors, echosounder setup (processing / transceiver unit, transducer, operator station).
- **Multibeam specification:** Comparison of Kongsberg multibeams, required sensors and input incl. accuracies: GPS, motion sensors, compass, time.
- **Alignment survey** incl. Required accuracies
- **SIS introduction:** Dongle, configuration, operation, data acquisition, water column logging, startup, launchpad, user interface, replay, data export.
- **SIS:** Installation – and runtime parameter, sounder supervision, control and debugging, seabed image (sidescan), water column data.
- **SIS:** Project administration, calibration, import of raw – and surveydata, sound velocity profiles, data export
- **SIS raw data file format** *raw.all

Entry requirements

Good Windows knowledge

Training setup

Combination of theory, demonstrations and exercises by replays

Language

Course is offered in German and English. Course documentation available in both languages.

Course duration

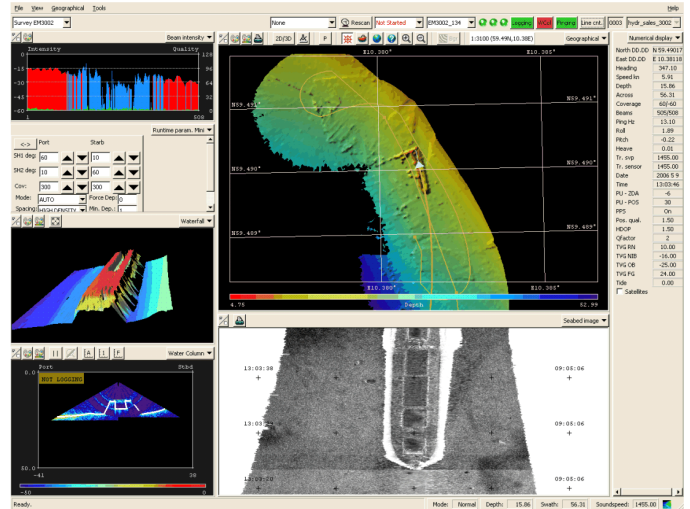
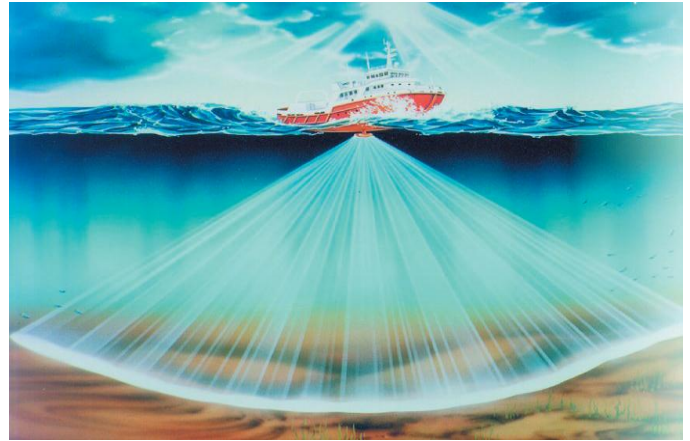
5 days

Number of participants

Max. 10 students

Location

- Training center Kongsberg Maritime GmbH, Hamburg



Registration

Contact:
 Coordinator Subsea Training
 Kongsberg Maritime GmbH
 Hellgrundweg 109, 22525 Hamburg
 ph.: +49 40 54 73 46 – 0, fax +49 40 54 73 46 – 99
 e-mail: km.hamburg@kongsberg.com

Confirmation

The course coordinator confirms the registration which is then binding.

Cancellation / Shifting

Required in written form.

Fees:
 Cancellation/shifting more than 4 weeks in advance:
Free of charge

Cancellation/shifting 2 to 4 weeks before start of training: *50% of quoted price*

Cancellation/shifting less than 2 weeks before start of training: *100% of quoted price*

WORLD CLASS – trough people, technology and dedication

www.km.kongsberg.com

Kongsberg Maritime GmbH
 Hellgrundweg 109
 22525 Hamburg
 Germany
 E-Mail: km.hamburg@kongsberg.com
 Tel.: +49 40 54 73 46 - 0