

EM[®] 1002



KONGSBERG



392523/A 2014-04-22

NEWS BULLETIN - END OF LIFE

Kongsberg Maritime aims to provide support to current and previous generations of products. However, the availability to key components is a limiting factor for support over time.

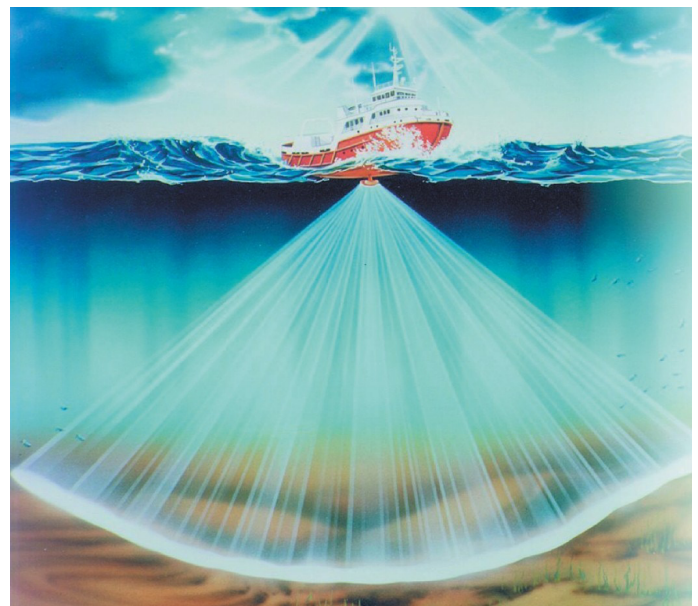
EM 1002 has reached end of life. The critical factor is the CPU board, other part may still be available. Please contact Customer support. An upgrade kit for old CPU boards is available. Customers with on-going maintenance contract agreement will still get support for their systems. Maintenance contract can be prolonged until 2015-06-30, this require that the EM 1002 is upgraded to the latest version of the CPU board. The CPU upgrade kit is available until 2014-06-30.

EM 1002 as product is replaced by EM 710.

Reservation: Due to possible obsolescence in materials and components, performance and prices are subject to change.

EM[®] is a registered trademark of Kongsberg Maritime AS in Norway and other countries.

Specifications subject to change without any further notice.



Kongsberg Maritime AS
Strandpromenaden 50
P.O.Box 111
N-3191 Horten
Norway

Telephone: +47 33 02 38 00
Telefax: +47 33 04 47 53
www.km.kongsberg.com
E-mail: subsea@kongsberg.com



KONGSBERG