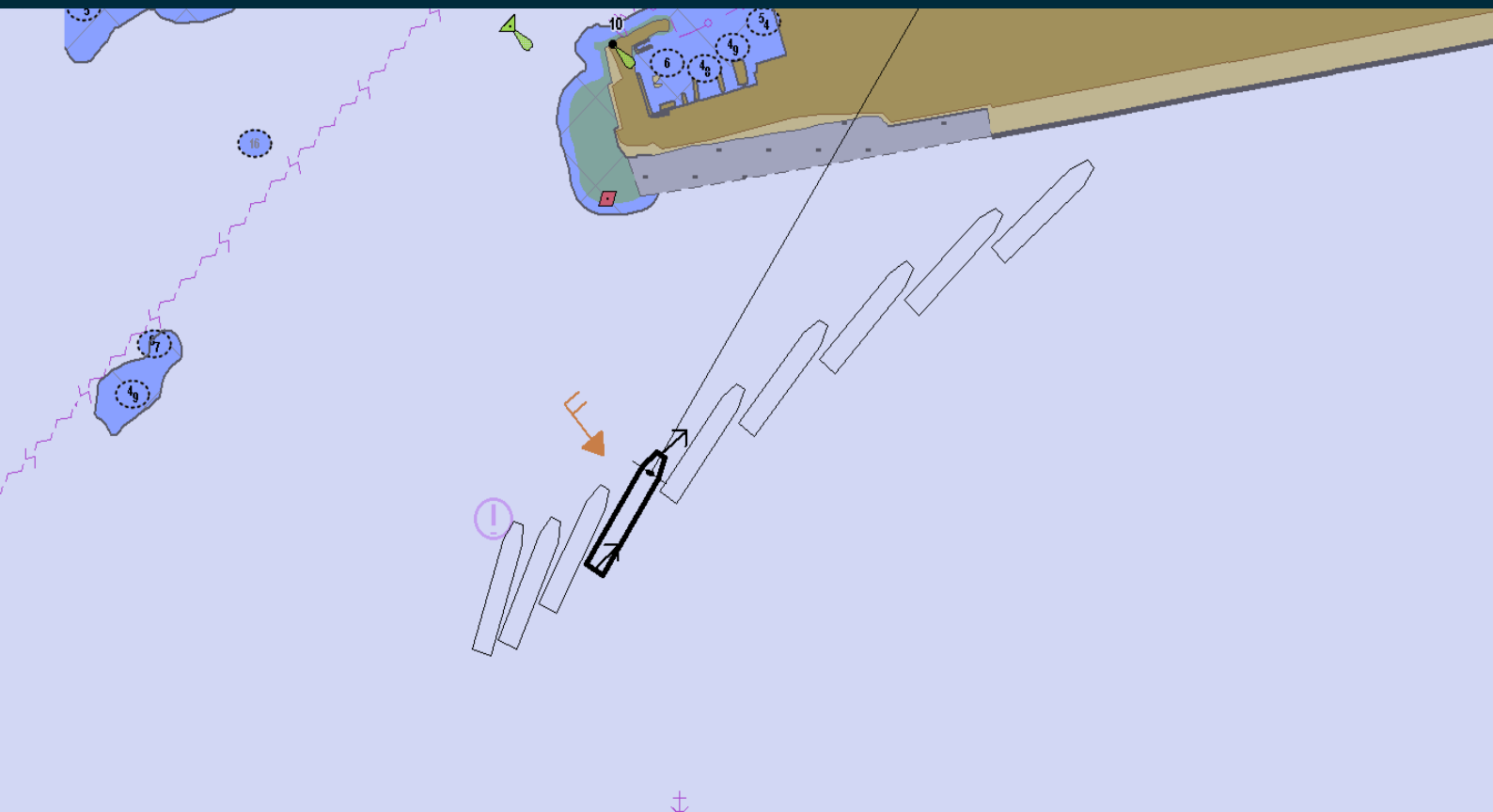


DOCKING



KONGSBERG



DOCKING OPTION FOR K-BRIDGE ECDIS AND K-BRIDGE PLANNING STATION

The Docking module provides information about the vessel that it is helpful to see while performing docking manoeuvres. The data is displayed on the chart and on a separate panel.

The Docking option is an additional software module that can be added to the K-Bridge ECDIS and Planning Station applications.

Information about the vessel such as the heading and past and predicted ship positions are displayed on the chart. At the same time a panel next to the chart provides relevant data for docking.

The operator can specify how the data is displayed: length of the speed vector and bearing line, interval and number of shown ship positions.

For reliable operation of the Docking module the own-ship must use an EPFS, a dual-axis sea-bottom tracking speed sensor, and a rate-of-turn gyro sensor.

FEATURES

- Past and predicted ship positions are shown on the chart. The operator can specify the number of past and predicted positions to display and the time interval between them.
- A wind arrow (indicating wind strength and direction) is shown on the chart.
- The docking ship's speed vector and bearing line are displayed.
- Useful information for manoeuvring is shown on a panel next to the chart.
- Distance measurement lines can be displayed from reference points on the own-ship to fixed positions or moving targets on the chart.

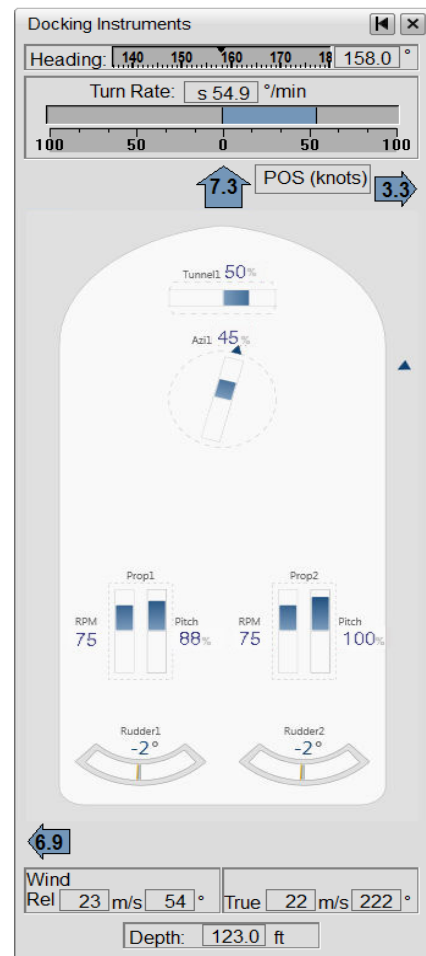
USEFUL DATA FOR DOCKING ON A SEPARATE PANEL

Once the Docking function is enabled, the operator can see helpful information for docking on the Docking Instruments panel next to the chart.

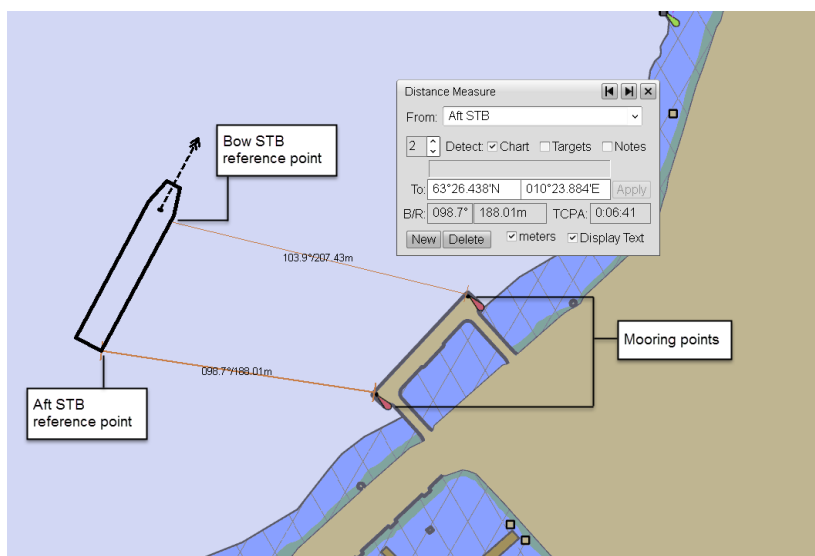
The data shown on the panel includes:

- the vessel's current heading (numerical and graphical)
- turn rate (numerical and graphical)
- wind speed and direction
- water depth
- indicators of the vessel's thruster, rudder and propeller activity
- water speed

The water speed data includes an indication of the source of the speed input used by the Docking function.



DYNAMIC DISTANCE MEASURING WHILE DOCKING



The operator can display distance measurement lines from reference points on the own-ship to fixed positions on the chart, to moving or stationary targets or mariners' notes.

While docking, the operator can follow the exact bearing and distance from the reference points on own-ship to the specified point on the chart.

Specifications subject to change without any further notice.